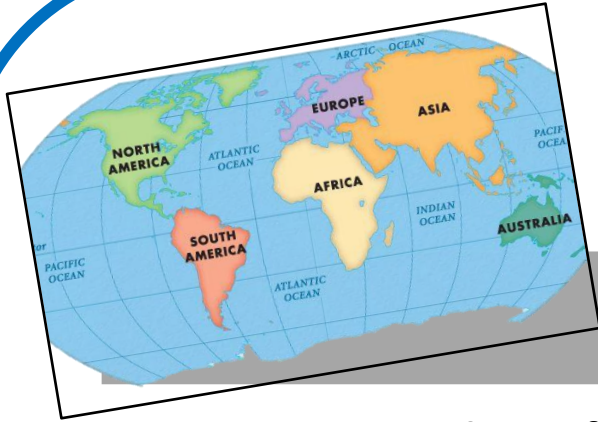


# EYFS Geography Journey



AUTUMN

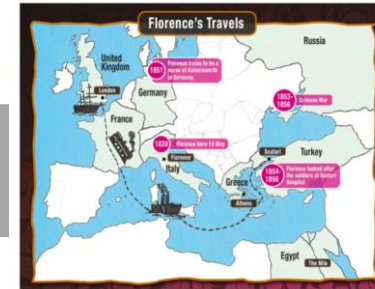


Maps and Significant Countries

Mapping Journeys



SPRING

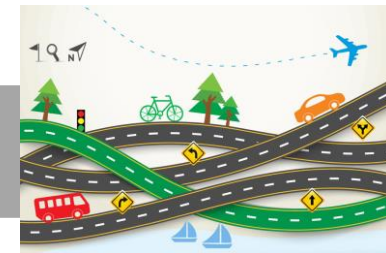


Contrasting Environments

The Journey of Florence Nightingale



SUMMER



Looking after the World

Transport and Journeys

# Y1/2 Geography Journey Cycle A



AUTUMN



**School and locality**

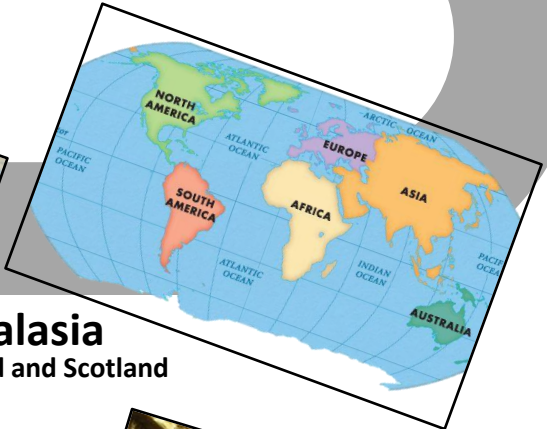
British Isles and Continent-Europe

**North America**

British Isle- Focus on London



SPRING



**Contrasting Africa and Antarctica**

**Australasia**

British Isle- Focus on England and Scotland  
Comparison



SUMMER



Human Impact: locality and  
Wider World -Conservation

**Extreme Weather –impact and  
conservation - South America**

**Different way of life - Asia**

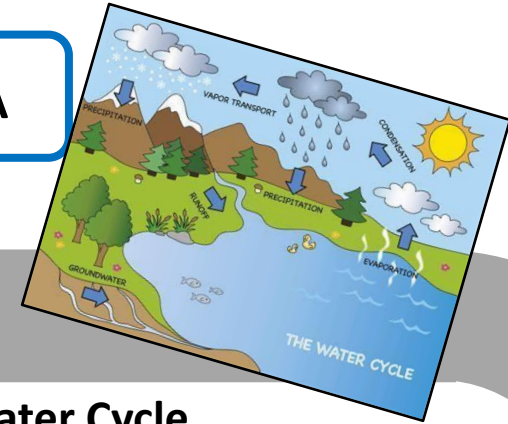
Human Impact: locality and Wider World -Culture

# LKS2 Geography Journey Cycle A



**Settlements and rivers  
including their use**

AUTUMN



**The Water Cycle**



**The UK - Cities, Towns & Villages**

SPRING



**The UK - Human & Physical  
features**



**Fieldwork Study of the school  
building & grounds**

SUMMER



**Protecting our Planet  
Conservationist - National Parks**

# UKS2 Geography Journey Cycle A

AUTUMN



Maps – Locating the countries and capital cities of the world



Viking invasion: impact on the UK

SPRING



Brazil, South America, The Amazon River and deforestation

Rainforests & The Water Cycle

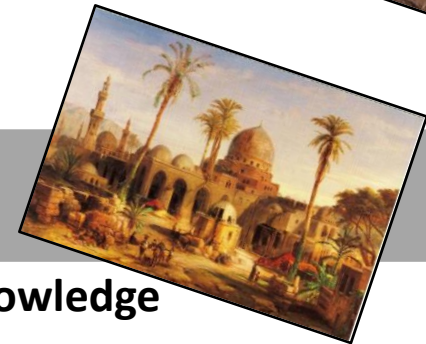


SUMMER



Protecting our Planet - Power, electricity and resources

Baghdad place knowledge and land use



# Y1/2 Geography Journey Cycle B

## AUTUMN



**School, locality and maps**



British Isle and surrounding seas and Europe



**North America**

British Isle- Focus on London



**Human impact: study on culture – The Philippines**  
Similarities and Differences, Ways of Life - Philippines and Normanton



## SPRING



**Hot and Cold Places - comparison to locality**

Contrasting Localities-Australasia & Antarctica



**Africa**

Significant individual - Wangari Maathai



## SUMMER



**Human Impact on Locality Environment and Conservation**

Extreme weather and conservation - North America



# LKS2 Geography Journey Cycle B

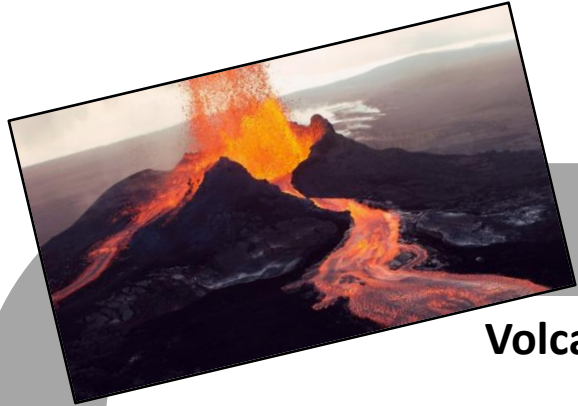


**Italy & the British Isles**

AUTUMN



**European Mountain ranges - The Alps**



**Volcanoes and Earthquakes**

SPRING



**Greece**



**Countries, regions and cities of Europe - Russia & Poland**

SUMMER



**Threats to habitats - Urban Environments**

# UKS2 Geography Journey Cycle B



**Marvellous maps**



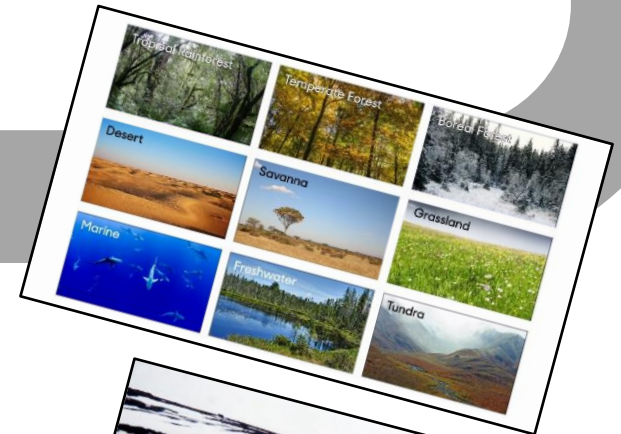
**Weathering, erosion and global warming - Grand Canyon**

AUTUMN



**Significant Individual – Marie Curie**

SPRING



**Biomes**

SUMMER



**Magnificent Mountains (Kilimanjaro) and Raging Rivers - Local, National and Worldwide**



**Frobisher Bay  
North Canada**